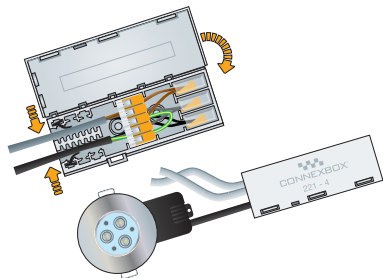


7 Keep similar size cables in the same slot.

It is important to keep similar sized cables in the same slot to ensure the gripper functions correctly.

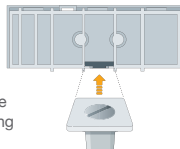
Once the cables are in position, firmly squeeze the enclosure body together and snap shut the lid.



8 Connexbox® Mounting Button.

The Connexbox® 221-4 can be fixed to a surface using the Connexbox® mounting button feature.

Mounting buttons are generally sold separately by our wholesalers.



Installation Instructions

For BS 5733-MF (Maintenance Free Accessory)

In situations where you need to make electrical connections in an inaccessible location it is important to ensure that the connectors and enclosure combined (accessory) meet the requirements of BS 5733 for a maintenance free accessory. The Connexbox® 221-4 meets these requirements when assembled according to these instructions.

- 1 Only use certified connectors.** For a complete list of connectors and comprehensive MF information follow the link generated by the QR Code on page 1.
- 2 Ensure the connectors are derated** in accordance with the requirements of BS5733 in respect of the cable ratings in the table below and the Maximum Aggregate Current limit is adhered to:

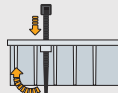
Cable csa mm ²	Max Rated Current (I _n) Amps	Max Aggregate Current Limit (I _a) Amps
0.75	4	50A
1.0	6	50A
1.5	10	50A
1.5	13	50A
2.5	16	50A
2.5	20	50A
4.0	25	50A

For example: The Wago® 221-4 Series connectors are rated for 32A (In) for general use. When used with 2.5mm twin and earth cable in an MF installation, the maximum rated current for the circuit should be reduced to either 16A or 20A, depending on the installation.

Maximum lag: In MF use, this limit must not be exceeded. The maximum lag typically equals the number of phase connectors multiplied by the rating of the circuit protective device.

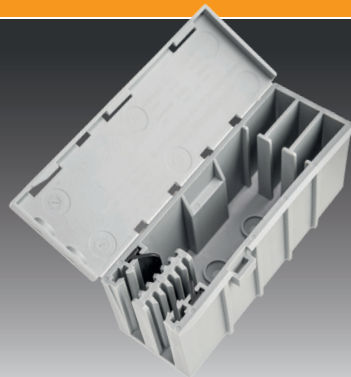
- 3 Follow the BS EN 60670-22 Accessory Installation.**
- 4 Secure the Connexbox® lid using the tie wrap locking point.**

Ensure the completed Connexbox® is not covered by insulating material.



Connexbox® 221-4 Electrical Enclosure

Simpler, Quicker, Safer.



CONNEXBOX®
Simpler • Quicker • Safer

T: +44 (0)1353 666 011 W: www.connexbox.com

Installation Instructions

For BS EN 60670-22 Accessory

The Connexbox® 221-4 is a compact electrical enclosure designed primarily for use with the Wago® 221-4 series lever clamp connectors. It is also compatible with a wide range of other push-on and lever-type connectors, making it a versatile solution for junction and splicing applications. The enclosure is rated 400V/4KV and can support cables with an overall diameter between 3mm and 8mm. The maximum number of connections is 20 when using 4 x Wago® 221-415 Connectors.

For detailed Product Information scan this Q-Code and follow the link.

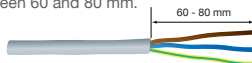


If you are unsure about any of the following steps or how to connect the circuit, then consult a qualified electrician.

Simpler, Quicker, Safer...

The Connexbox® 221-4 is easy to use and fast to fit. Just follow the steps below and see how using the Connexbox® 221-4 will revolutionise the way you work.

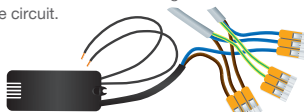
- 1 Strip back the outer sheath** of the cable between 60 and 80 mm.



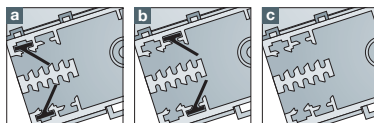
Note: Where a 221-415 is used as an earth connector it can be placed in the centre connector location above the mounting button feature. In this case make the earth wires 10 mm longer.

- 2 Select required connectors to complete the installation.** Ensure that your chosen connector combination is appropriate for the cable being connected. The type of wire will typically be fine stranded, stiff stranded or solid core. Lever style connectors are usually able to accommodate all these types. Push on connectors should only be used with solid core except when the connector manufacturer also permit stiff stranded.

- 3 Connect the cables.** Strip off the insulation covering the wires by the appropriate amount and connect the cables together to make the circuit.



- 4 Configure the Cable Clamp.** Position the black grippers provided into position according to the size of the cable to be gripped.

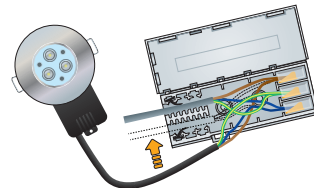


- Tight Position** – for small diameter cables such as small flex.
- Offset Position** – for medium sized cables like twin and earth cables.
- No gripper** – the grippers can be removed to accommodate larger round flex cables that are 8 mm in diameter.

- 5 Connect the cable clamp.**

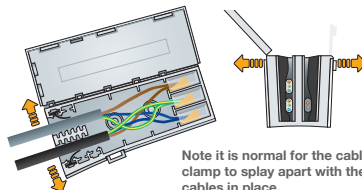
Option 1: Arrange all the connectors to line up with the receptacles.

Option 2: Position phase terminals into each receptacle and position earth terminal (Wago® 221-415) onto middle shelf of enclosure.



- 6 Slide the cables into the Gripper Slots.**

Once the connectors are in position the cables can be pushed down into the gripper slots. Distribute the cables evenly between both slots. This ensures the gripper pressure is shared uniformly across all cables. The opening of the enclosure can be flexed apart to make inserting the cables easier.



Note it is normal for the cable clamp to play apart with the cables in place.